



GOMMA
LIZ

EXTRUDED RUBBER PROFILES

www.gomma.rs

ABOUT US

GOMMA Line is an IATF 16949, ISO 9001, and ISO 14001 certified manufacturer of rubber sealing profiles and parts. Our product line includes extruded rubber profiles, molded rubber products, brake, and hydraulic clutch hoses as well as tools for rubber extrusion and molding manufacturing processes. Our manufacturing facilities are equipped with extrusion, vulcanization, flocking lines, injection molding machines, as well as CNC machines for metalworking.

GOMMA Line meets the demands of Industry 4.0 and concepts of Lean manufacturing. Starting out as a rubber products and parts manufacturer, trusted by companies from automotive and home appliances industries, GOMMA Line has accumulated and consolidated expertise in rubber technology, tool design, and process optimization. We offer support in rubber parts design that will optimally meet product requirements.



AUTOMOTIVE RUBBER PROFILES



GOMMA
LINE



AUTOMOTIVE RUBBER PROFILES

GOMMA Line develops and supplies OEM and TIER manufacturers with sealing rubber profiles. We offer array of specific added value services specifically designed for automotive sealing applies, such as flocking rubber profiles for glass-run channel and window profiles, joining and splicing profiles for door, trunk, windshield and HVAC sealing systems, adding adhesives or **3M** double-sided tapes.



VAN VEHICLES RUBBER PROFILES



GOMMA
LINE



COMMERCIAL VEHICLES RUBBER PROFILES

GOMMA Line produces rubber sealing profiles for a range of commercial vehicles, from vans to delivery vehicles. Our extruded rubber profiles are durable and handle the stress of daily usage in commercial vehicles. Our team develops both static and dynamic seals for tailgates, barn doors, windows, doors, hood and HVAC seals. Our manufacturing facility is equipped with machines for flock application, adhesive application and tools for developing specific corner solutions.

LOADING VEHICLES RUBBER PROFILES



GOMMA
LINE



LOADING VEHICLES RUBBER PROFILES

- Static and dynamic seals
- Glass run channel profiles
- Weather strip profiles
- Window and hood seals
- Inner and outer door profiles
- Cowl seals



AGRICULTURE VEHICLES RUBBER PROFILES



GOMMA
LINE



AGRICULTURE VEHICLES RUBBER PROFILES

GOMMA Line rubber profiles for agriculture vehicles are resistant to ozone, ultra-violet rays, chemicals from fertilizers and oils used in farming. GOMMA Line rubber profile portfolio for agriculture vehicles includes:

- Static and dynamic seals
- Weather strip profiles
- Window, door and hood seals
- Cabin seals
- 360 degree cabins' seals



LEISURE VEHICLES RUBBER PROFILES



GOMMA
LINE



LEISURE VEHICLES RUBBER PROFILES

Our company develops complete sealing systems for RV vehicles. GOMMA Line manufacturing facility and tool workshop allows us in creating sealing systems specific for RV industry. Value-added services such as applying adhesives and corner solutions tailored for needs for RV manufactures. Our profiles are suitable for:

- Static and dynamic seals
- Window and doors profiles
- Maintenance doors sealing
- Ventilations sealing



RAILWAY & MASS TRANSIT VEHICLES RUBBER PROFILES



GOMMA
LINE



RAILWAY & MASS TRANSIT VEHICLES RUBBER PROFILES

GOMMA Line manufactures rubber profiles and molded parts for railway and mass transit vehicles up to latest standards. Our product range specialized for mass transit vehicles includes:

- Door and windows seals
- HVAC seals
- Vibration insulators
- Corner injection moldings
- Lighting gaskets



SPECIALIZED VEHICLES RUBBER PROFILES



GOMMA
LINE



SPECIALIZED VEHICLES RUBBER PROFILES

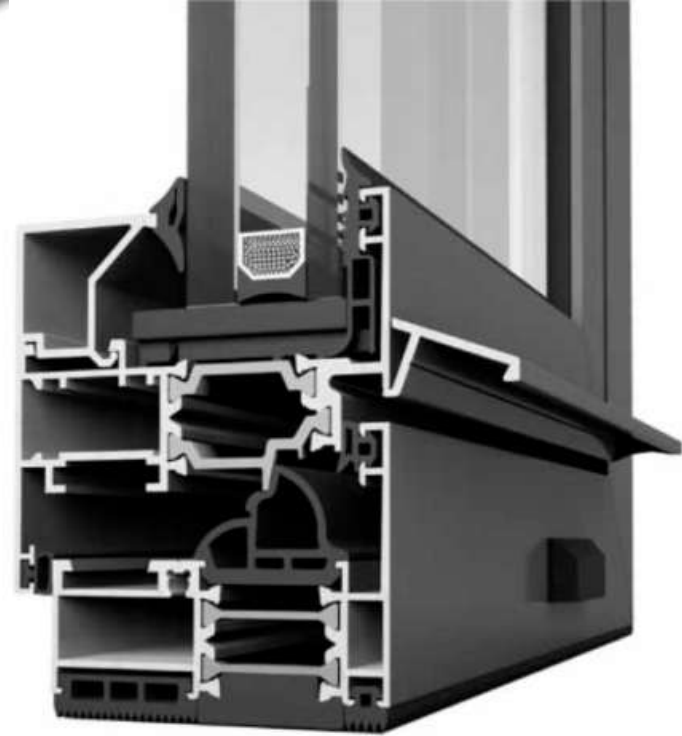
GOMMA Line supplies quality custom extruded and molded rubber products used for special vehicles and machinery.

- Windshield and door seals
- Window and cabin weatherstrips
- Hood seals
- Crow seals
- Air distribution hoses



BUILDING & CONSTRUCTION RUBBER PROFILES

GOMMA
LINE



BUILDING & CONSTRUCTION RUBBER PROFILES

GOMMA Line manufactures and supplies custom made rubber profiles for various construction purposes:

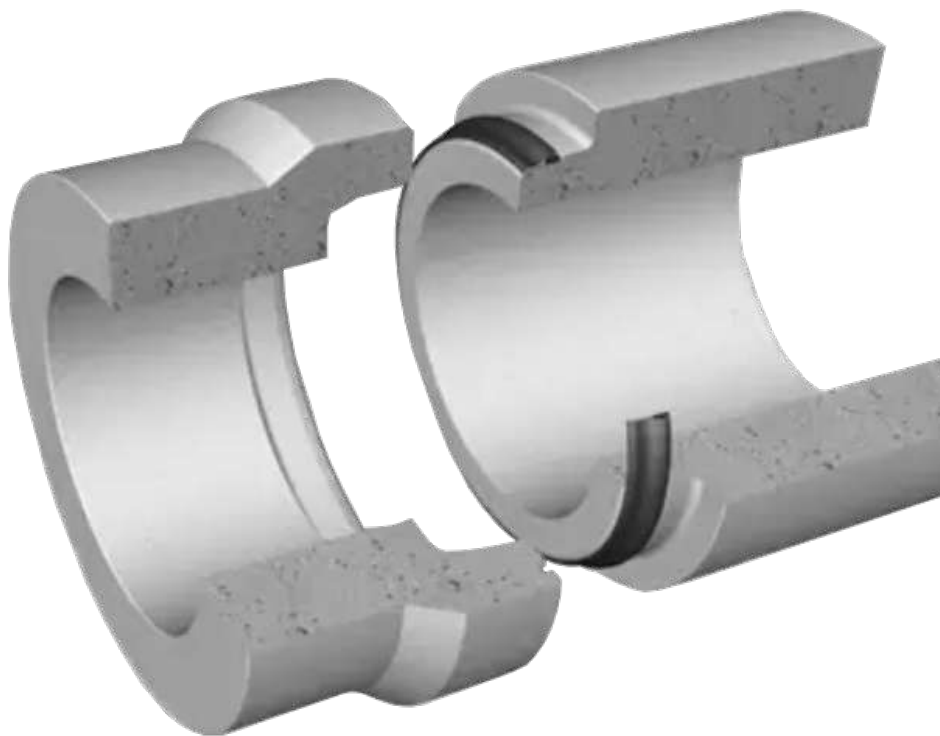
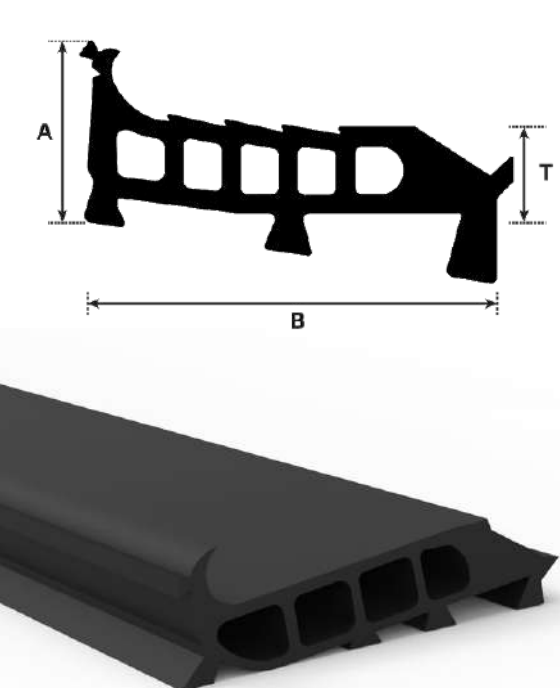
- Doors and Windows Seals
- Curtain Wall Seals
- Structural Glazing Seals
- Thermal Breaks
- Edge Protection
- Rubber Filler Profiles
- Garage Doors Seals



CONCRETE PIPES RUBBER PROFILES



GOMMA
LINE



CONCRETE PIPES RUBBER PROFILES

Our range of concrete pipe seals are incorporated into the joint area, they are easy to center during joining. We offer different dimensions, customer specific profile requirements and hardness available on request.



SHIPPING CONTAINERS RUBBER PROFILES



GOMMA
LINE

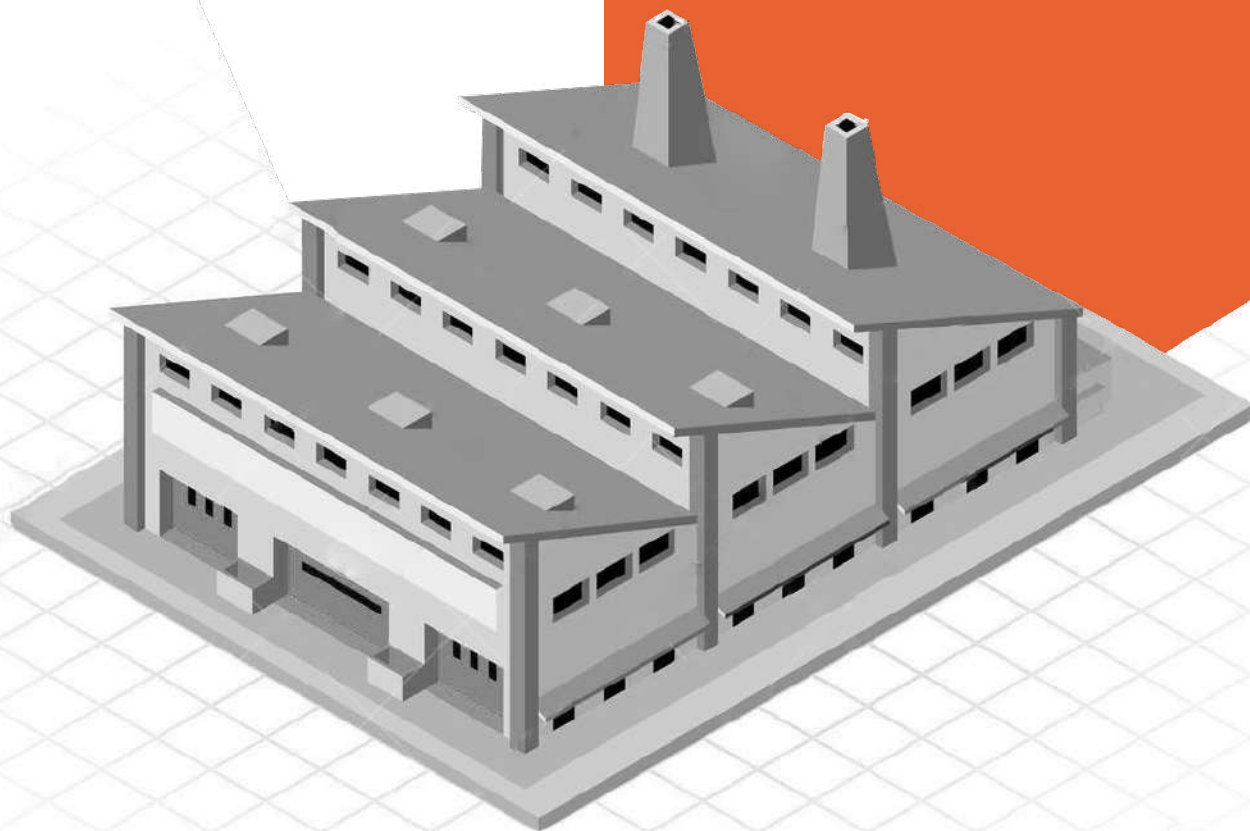


CONTAINER RUBBER PROFILES

GOMMA LINE can supply a wide range of container door seals. These seals are designed to provide excellent sealing properties in a variety of environments. We can supply a diverse range of shapes and sizes to suit almost all container types. They function particularly well in extreme cold temperatures and offer good resistance to weathering and ozone damage.



INDUSTRIAL ENCLOSURES



GOMMA
LINE



INDUSTRIAL RUBBER PROFILES

GOMMA Line offers extruded rubber profiles for industrial and electrical enclosures. Our product portfolio includes:

- Rubber profiles with wire carrier
- Sponge rubber profile
- Coextruded rubber profiles
- Rubber profiles with **3M** double-sided tape
- Rubber profile with adhesive
- Self-gripping rubber profiles



[illegible]

GOMMA
LINE



RUBBER MOLDED PARTS

GOMMA Line manufacturing facilities include modern rubber injection machines as an in-house tool workshop where all projects start as a request from the customer to meet a specific need. Our team helps to develop the best possible product by advising materials, technology, and processes.

HIDRAULIC BRAKE HOSES

GOMMA Line has a modern production equipment, assembly and testing of brake hoses and hoses for hydraulic clutch systems. Products produced in our plants suit demanding international standards (SAE J 1401, FM VSS 106, ISO 3996), as well as all the technical requirements and standards.



OUR TECHNOLOGIES

GOMMA Line manufacturing facilities are equipped with tool and mold workshop and wide range of machines for value added technologies. We offer developing extrusion dies for specific sealing solutions and tools for specific bonding and corner solutions.

GOMMA Line technologies:

- Flocking rubber profiles;
- Double-sided adhesive tape application,
- Coextrusion (wire/metal inserts, coatings, sponge rubber);
- Injection joining of profiles;
- Specific corner solutions;
- Butyl adhesive application;
- Splicing (head to head joined profiles);
- Tool workshop.



OUR PRODUCT LINE

GOMMA Line's product line includes **extruded rubber profiles**, **rubber molded parts**, and **brake hoses**. Our expertise offers a complete profile design. Our in-house tool workshop helps a quick product development whereas GOMMA Line's spectrum of services assists in delivering products that fulfill products purposes. Customer needs and high-quality are the main focus of our team. Our expert team developed over one thousand rubber products for automotive, special vehicles, and home appliances markets.



CONTACT US

Sales department:

Mr. Nebojša Janićijević

Tel: +381 34 617 05 50

Mobile: +381 65 418 07 07

Fax: +381 34 617 05 57

Mail: nebojsa.janicijevic@gomma.rs

Locations:

Serbia



Kragujevac Plant

19. Oktobra 2
34000 Kragujevac

Russia



Togliatti Plant

3rd Magistral str.,
building No.5/1
SEZ IPT territory,
Stavropol district,
Samara region, 445143

Russia



Moscow Office

Banniy lane 2, bldg
1, office 38