

GOMMA LINE

corporate presentation

We shape rubber

GOMMA Line is certified rubber parts and components manufacturer for automotive, agriculture and specialized vehicles industry, also as home-appliances and industrial sector. Our product line includes extruded rubber profiles, rubber molded parts and brake hoses.

Established in 2007 with the aim to supply the Automotive Industry with extruded rubber profiles and molded parts, GOMMA Line managed to become not only a supplier of leading OEM and Tier1 manufacturers within the automotive segment, but also in other industrial segments like, amongst other, Home Appliances. With an in-house tool workshop, continuous investments in technology and expertise, GOMMA Line was granted the Top Exporter Award by the Serbian Investment and Export Promotion Agency.

Product line



Extruded profiles

- Extrusion die design and production
- Flocking technology
- Joining and splicing
- Adhesive application
- Coextrusion



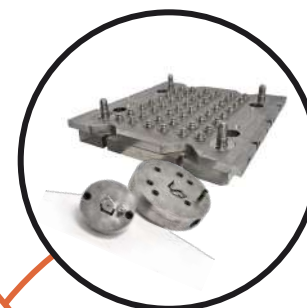
Molded parts

- Tool mold design and production
- Injection joining
- Cold-runner systems



Brake hoses

- Standards: SAE J 1401, FM VSS 106, ISO 3996
- ZnNi alloy surface protection
- Corrosion resistance



Tools and molds

- High-quality steel mold and dies
- Developing corner solutions
- Reverse engineering

Extruded rubber profiles

THAT MEET THE INDUSTRY DEMAND AND SUPPORT PRODUCT DESIGN.

GOMMA Line's core competence is developing sealing systems that keep the vibration and noise at a minimum level. Our sealing systems are not only compact and durable in all conditions but also meet the required functionality terms. Our expertise offers a complete profile design.

Our in-house tool workshop helps a quick product development whereas GOMMA Line's spectrum of services assists in delivering products that fulfill products purposes.



Extruded rubber profiles

SPECIFIC, AS YOU NEED IT!

We offer specific corner bonding solutions, at various angles and material joints. We can supply profiles in every conceivable form – with perforations or cutouts, as vulcanized molded pieces, metal inserts and diverse surfaces.

GOMMA Line offers specific options for rubber profiles:

- Flocked rubber profiles;
- Rubber profiles with metal and wire carrier insert;
- Coextruded rubber profiles;
- Rubber profiles with double-sided adhesive tape, coatings and butyl;
- Joined rubber profiles (injection joining and splicing).



Rubber molded products

RUBBER IN ALL FORMS.

GOMMA Line manufacturing facilities include modern rubber injection machines as an in-house tool workshop where all projects start as a request from the customer to meet a specific need. Our team helps to develop the best possible product by advising materials, technology, and processes.

Working together with leading raw material suppliers in Europe, we provide greater value to our partners by designing and optimizing custom molded rubber parts and manufacturing processes that address the specific needs of each program. We deliver high-precision, high-volume, and top-quality solutions to our customers.



Rubber molded products

MEETING THE NEEDS OF OUR CUSTOMERS.

GOMMA Line serves an array of industries as the rubber products manufacturer, including but not limited to automotive components, home appliance products, agricultural machinery, commercial vehicles and railway industry.

Manufacturing of molds is supported by a highly skilled and experienced team of rubber technologists as well as engineers for the design and manufacturing of molds. In-house tool workshop lower product development and correction time. GOMMA Line advanced rubber molding capabilities allow us to manufacture rubber parts for your company's needs in an infinite variety of shapes, sizes, colors, and configurations.



Brake hoses

CAR MANUFACTURERS TRUST OUR QUALITY.

GOMMA Line serves an array of industries as the rubber products manufacturer, including but not limited to automotive components, home appliance products, agricultural machinery, commercial vehicles and railway industry.

Manufacturing of molds is supported by a highly skilled and experienced team of rubber technologists as well as engineers for the design and manufacturing of molds. In-house tool workshop lower product development and correction time. GOMMA Line advanced rubber molding capabilities allow us to manufacture rubber parts for your company's needs in an infinite variety of shapes, sizes, colors, and configurations.



Tool and molds for rubber

CAR MANUFACTURERS TRUST OUR QUALITY.

GOMMA Line serves an array of industries as the rubber products manufacturer, including but not limited to automotive components, home appliance products, agricultural machinery, commercial vehicles and railway industry.

Manufacturing of molds is supported by a highly skilled and experienced team of rubber technologists as well as engineers for the design and manufacturing of molds. In-house tool workshop lower product development and correction time. GOMMA Line advanced rubber molding capabilities allow us to manufacture rubber parts for your company's needs in an infinite variety of shapes, sizes, colors, and configurations.



Why choose GOMMA Line products?



KNOW-HOW TECHNOLOGY

Experts at GOMMA Line work in developing specific tooling technologies that meet the product requirements considering the further assembling and total functionality of system.



SPEED AND EFFICIENCY

Tooling at site offers short lead times in product verification, making changes in development phase. Advanced technology in prototype testing allows us to predict mistakes and defects before the serial production due that FMEA analysis incorporated in GOMMA Line manufacturing system.



CERTIFIED QUALITY

Our product are manufactured in accordance with international quality standards. All products manufactured in GOMMA Line facilities are compliant with IATF 16949, ISO 9001 i ISO 140001.

Markets we serve

GOMMA Line develops products for industries in demand. Our product line comprises various industrial sectors, our core competence is developing sealing systems for static and dynamic assemblies.



Automotive

- Static and Dynamic seals
- Glass run channels
- Weatherstrip profiles
- Rubber molded parts
- Brake and hydraulic clutch hoses

Agriculture vehicles

- 360-degree cabin seals
- Window, door and hood seals
- Weatherstrip profiles

Recreational vehicles

- Cabin window seals
- Maintenance door seals
- Cabin door and edge profiles
- Weatherstrip profiles

Loading vehicles

- Window and hood profiles
- Inner and outer door seals
- Air distribution hoses
- Weatherstrip profiles
- Rubber molded products

Railway vehicles

- Sliding door seals
- Folding door seals
- Inward-swinging and outward-swinging door profiles
- Cabin and window seals

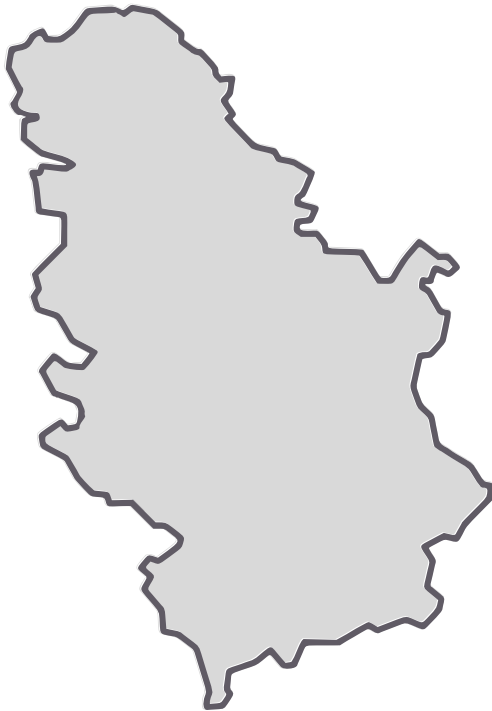
Home appliances

- Bellows
- Drainpipes
- Elbows
- Gaskets
- Grommets
- Adapters

Why choose us?

FREE TRADE ZONES

15



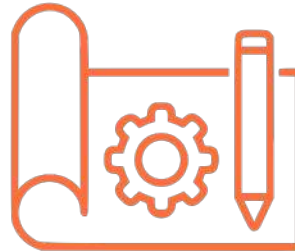
- Serbia has **Free Trade Agreement** European Union, Russia, Kazakhstan, Belarus, Turkey, EFTA and CEFTA, and **GSP Agreement** with Japan, Australia and United States, which leads to market up to 1,3 billion consumers.
- Quick lead time from inquiry to prototype testing, all design changes and tests run under one roof by the team of skilled engineers and rubber technologists.
- GOMMA Line facility incorporated in its production facilities the tool workshop for developing custom extrusions dies, molds and tools for specific joining solutions.

From inquiry to serial production



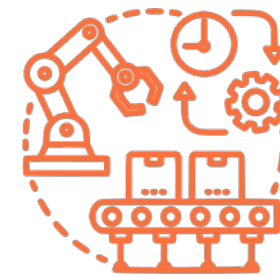
INQUIRY

All projects start as a request from the customer to meet a specific need, our team helps to develop the best possible product by advising materials, technology, and processes. We use our years of rubber expertise and tool design to produce rubber components that meet the required specification.



QUOTE & CONCEPT

As the entire manufacturing process is performed under the same roof we ensure complete control of every stage of the manufacturing process, including pressure testing of each unit. Our team consists of experts with wide knowledge in terms of rubber technology, tool design, and process optimization.



SAMPLE TESTING & PRODUCTION

After the samples & quote are accepted, GOMMA Line team prepare everything required for starting the manufacturing of test run series. Every stage of the manufacturing process is carefully checked and closely monitored. Quality monitoring is ensured through the whole value chain.

Production

WE SHAPE RUBBER. INNOVATIVE APPROACH IN DELIVERING SOLUTIONS & PRODUCTS

GOMMA Line meets the demands of Industry 4.0 and concepts of Lean manufacturing. Our manufacturing facilities have a efficient layout and optimized materials flow. Production stations are equipped with machines for rubber injection molding, rubber extrusion lines as well as with value-added technologies such as flocking lines, engravings, hole punching.

GOMMA Line tool-work shop is under the same roof with production facility. Manufacturing of molds and dies in our organization is effected by a highly skilled and experienced team consisting of rubber technologists as well as mechanical engineers. Our engineers study the needs of your products and design the mold that will provide the usability of rubber parts for your products. Our team is here to advise you on the most suitable solution for your project.

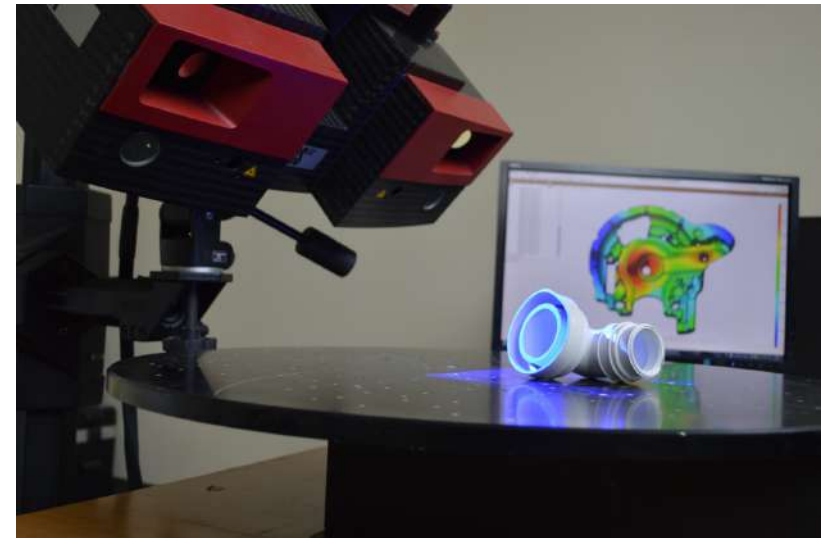


Quality

CERTIFIED QUALITY FOR CUSTOMER SATISFACTION AND CONTINUOUS IMPROVEMENT.

In order to meet customer expectations our entire organization performs series of required tasks and activities. All these activities are systemized in our Quality system which is certified in line with the latest international quality standards ISO 9001:2015, IATF 16949:2016, and ISO 14001:2015.

A quality measurement system is incorporated throughout the manufacturing value chain. GOMMA Line's Quality laboratory is equipped for testing entering materials from our suppliers as well as our finished products. In general, we consider in-house quality assurance a top priority, hence our laboratory is equipped with measurement devices for analyzing rubber compound and manufactured parts properties.



Company timeline

2007

GOMMA Line is established and started with production in 2007. in Kragujevac, Serbia, as privately owned company.

2013

In 2013. GOMMA Line established its own tool workshop. The new facility was located close to a new production facility in Kragujevac with a total surface of 1400 m².

2017

In 2017. GOMMA Line factory in Serbia was expanded and relocated to a new site with total covered area of 6500 m².

2019

In 2019. GOMMA Line Russian factory was relocated to Togliatti SEZ area (Special Economic Zone).



2009

In 2009. the company was relocated to a new facility and expanded its premises to 2500 m². With new clients GOMMA Line increased production capacities mainly in extrusion and flocking of rubber profiles and in the injection joining process.

2015

Meeting our customer's needs is a key element for GOMMA Line. Opening of a new production plant in Togliatti, Russia we wanted to support demand from expanding the market in Russia With new engineering and administrative facilities in Moscow and a production plant in Togliatti in Russia,

References



2022 Facts & Figures



10 M€ in turnover



150 employees

Industry share



- Automotive 85,2%
- Agriculture 6,2%
- Others 8,6%

Country share



- Russia 53%
- Italy 23,3%
- Germany 8,8,%
- Belarus 8,4%
- Other EU 6,6%

Leading Serbian rubber components manufacturer
Capacity for serial production
Award *Top exporter of the year*

Locations

SERBIA

 Kragujevac Plant

ITALY

 Reggio Emilia Sales Office

FRANCE

 Dijon Sales Office

